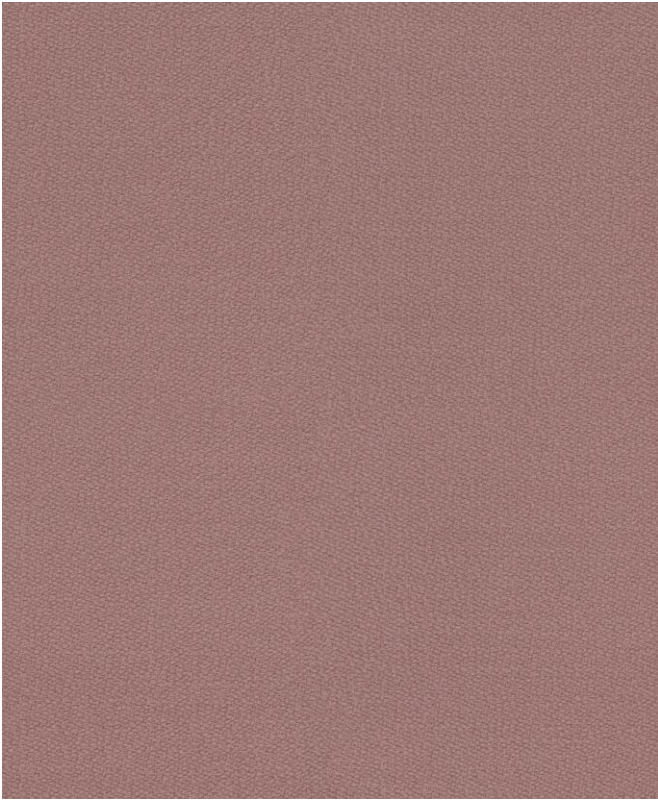


## KVADRAT/RAF SIMONS



### VIDAR 4

Design: Raf Simons

Type: Upholstery

Composition: 94% new wool, 6% nylon

Yarn type: Woollen

Binding: Crepe weave

Width: Approx. 140 cm, 55 inches

Weight: Approx. 770 g/lin.m, 24.7 oz/ly

Repeat: None

Foreign fibers may occur in light colours

Cleaning: Vacuum clean frequently, ideally every week.

Remove stains as soon as they occur, with clean warm water or sparkling water. Extraction clean when necessary.

Extraction cleaning might dissolve water-based glue. Pay attention to temperature and amount of cleaning fluid.

Disinfection, see kvadrat.dk

More info: Care and maintenance kvadrat.dk



10 year warranty



### Abrasion

Approx. 100.000 Martindale rubs, EN ISO 12947

*Abrasion test results exceeding ACT performance guidelines are not an indicator of product lifespan. Multiple factors affect fabric durability and appearance retention*

### Pilling

Note 4, EN ISO 12945

### Seam slippage

Seam parallel to warp: 5.5 mm parallel to weft: 7.0 mm  
EN ISO 13 936-2 180 Newton

### Lightfastness

Note 5-7 ISO 105-B02

### Fastness to rubbing

Dry note 3-5 ISO 105-X12

Wet note 3-5 ISO 105-X12

### Absorption

0.55/Class D (flat) EN ISO 354

### Airflow

367 Pa s/m EN 29053

### Flame resistance

AS/NZS 3837 class 2  
BS 5852 crib 5 with treatment \*  
BS 5852 part 1  
EN 1021-1/2  
IMO FTP Code 2010 Part 7 with treatment \*  
IMO FTP Code 2010 Part 8  
NF D 60 013  
NFPA 260  
NFPA 701 with treatment \*  
SN 198 898 5.3 with treatment \*  
UNI 9175 1IM  
US Cal. Bull. 117-2013

Free from added flame retardant chemicals as standard

*\* To pass this test flame retardant treatment is necessary.  
We are looking into more environmentally friendly alternatives  
but for now, the external finisher may use a treatment  
containing halogen-based flame retardants*

### ACT Guidelines Woven fabrics

#### Flammability

US Cal. Bull. 117-2013

#### Dry & Wet Crocking

Dry Crocking: Grade 4.5  
Wet Crocking: Grade 4.0

#### Colour Fastness to Light

Grade 5.0 minimum 40 hours

#### Physical properties

Pilling Class 4  
Breaking Strength warp 154 / weft 204 lbs.  
Seam Slippage warp 101 / weft 82.5 lbs.

#### Abrasion

100.000 cycles Martindale – High Traffic / Public Spaces

#### Benefits of wool

Wool is a renewable resource  
Wool is very comfortable because of its ability to absorb/  
give off humidity  
Wool is flame retardant  
Wool is biodegradable  
Wool is naturally soil resistant  
Wool ages with grace

### Quality benefits

Complies with Möbelfakta  
Very good abrasion  
Good lightfastness  
Flame retardant

### Environmental benefits

EU Ecolabel compliant  
No content of PFCs or 'PFAS'  
REACH compliant  
Californian Proposition 65 list compliant  
LBC Red list compliant  
Healthier Hospitals compliant

### Green building certificates

Greenguard Gold: Low chemical emission  
Environmental Product Declaration (EPD): Based on a LCA following  
EN 15804 and follow the standard of ISO 14040  
Health Product Declaration (HPD): Declaring textile content and  
substance

### Country of origin

Norway

### Warranty

10 years. See terms and conditions on kvadrat.dk

Kvadrat packaging and cardboard is recyclable. Cardboard material is  
FSC certified and / or contains recycled content.

For further information  
kvadrat.dk